



MONTHLY MEMBERSHIP PROGRESS REPORT

District 12 S

Results as of: 2/28/2017

GMT: HARVEY WHITLEY

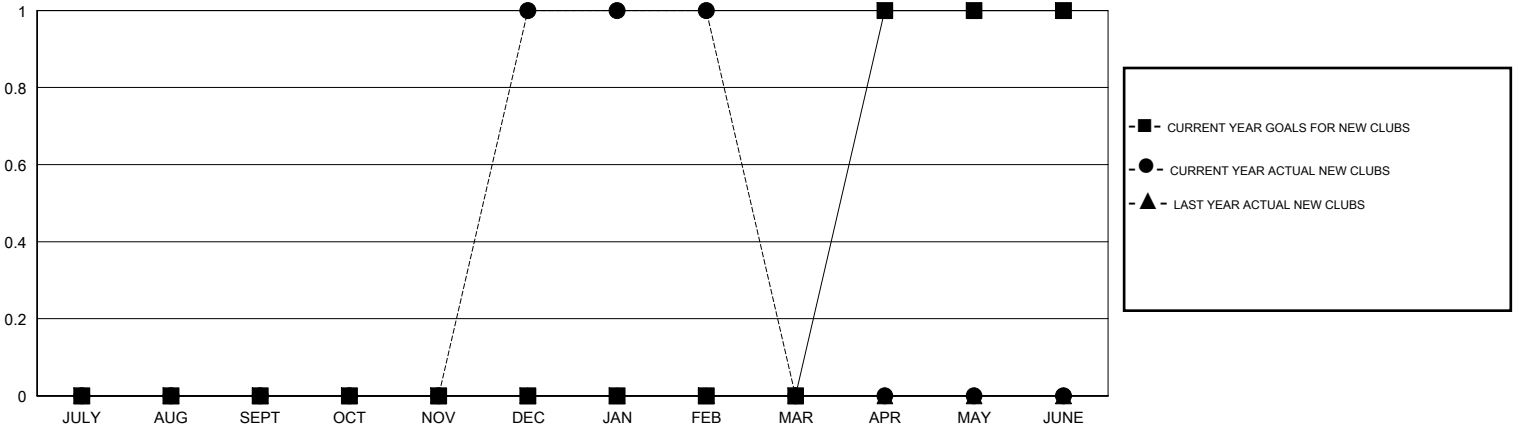
LOCATION TENNESSEE

GMT CA

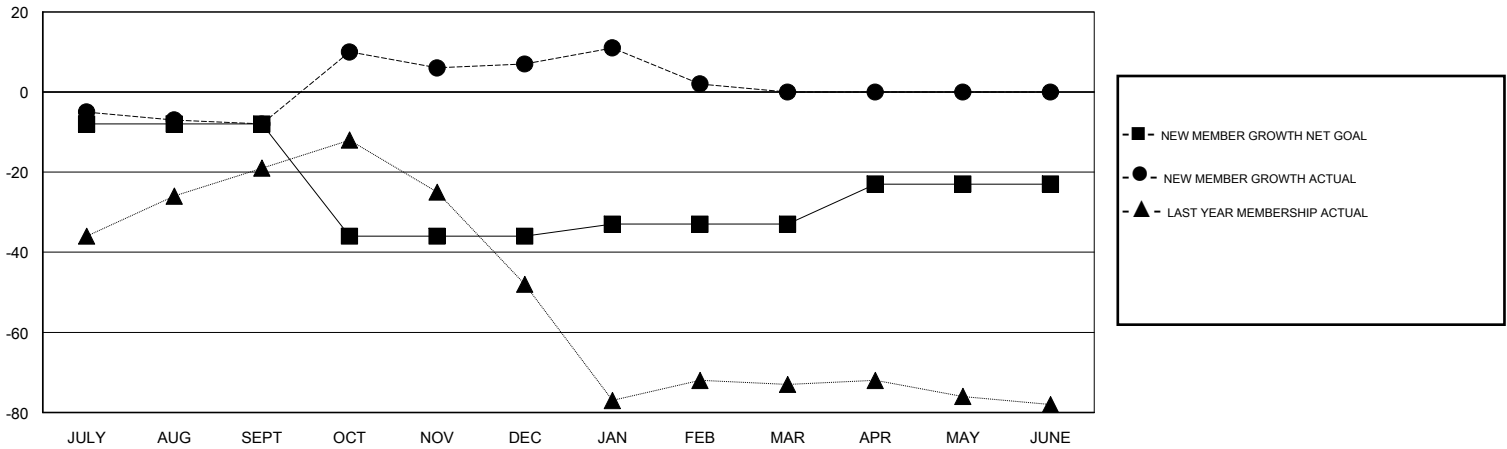
Clubs			
RESULTS FOR 2016-2017			
QUARTER	NEW CLUB GOAL	NEW CLUBS	DROPPED CLUBS
JULY/AUG/SEPT	0	0	0
OCT/NOV/DEC	0	1	0
JAN/FEB/MAR	0	0	0
APR/MAY/JUNE	1	0	0

Members			
RESULTS FOR 2016-2017			
QUARTER	NEW MEMBER GROWTH NET GOAL (not reinstated or transfers)	NEW MEMBER GROWTH ACTUAL (not reinstated or transfers)	DROPPED MEMBERS ACTUAL (including transfers)
JULY/AUG/SEPT	-8	37	45
OCT/NOV/DEC	-28	59	44
JAN/FEB/MAR	3	25	30
APR/MAY/JUNE	10	0	0

GOALS AND ACTUAL NEW CLUBS CUMULATIVE



GOALS AND ACTUAL MEMBERS CUMULATIVE



DROPPED CLUBS: 0	22 CLUBS OF 50 ADDED 1 OR MORE NEW MEMBERS	<u>GENDER DISTRIBUTION</u>	
DROPPED MEMBERS		MALE	723 (59.65%)
DECEASED	16	FEMALE	489 (40.35%)
CLUB CANCELLED	0	TOTAL FAMILY UNIT MEMBERS	247
OTHER	103	FAMILY MEMBERS PAYING HALF DUES	127
TOTAL	119		

[CLICK HERE FOR CUMULATIVE MEMBERSHIP DATA](#)